

# Using Wordle in the Classroom

---

Wordle is an app for generating “word clouds” from the text that you provide. It is useful as a lesson starter, to assess the level of focus in student essays and to develop student writing by providing stimulus.

## 1. Browse to [www.wordle.net](http://www.wordle.net)

**Wordle**

[Home](#)

[Create](#)

[Gallery](#)

[Credits](#)

[News](#)

[Forum](#)

[FAQ](#)

[Advanced](#)

**W**ordle is a toy for generating “word clouds” from text that you provide.

The clouds give greater prominence to words that appear more frequently in the source text. You can tweak your clouds with different fonts, layouts, and color schemes. The images you create with Wordle are yours to use however you like. You can print them out, or save them to the Wordle gallery to share with your friends.

[Create your own.](#)

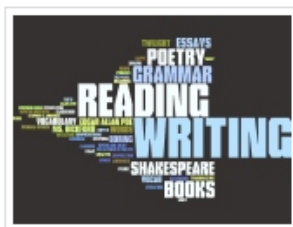
View some examples created by others...



[English notebook cover](#)

by [Ace Acedemic!](#)

5 months, 3 weeks ago



[Period G](#)

by [Meredith](#)

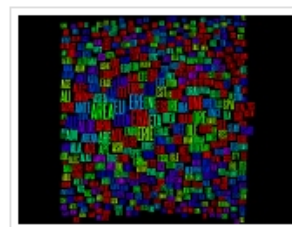
5 months, 1 week ago



[US Constitution](#)

by [Jonathan](#)

2 months, 2 weeks ago



[Most Common Crossword Answers](#)

by [Jonathan](#)

1 year, 2 months ago

Click on "Create your own"

## 2. Paste in some text

Wordle

Home

Create

Gallery

Credits

News

Forum

FAQ

Paste in a bunch of text:

How doth the little crocodile  
Improve his shining tail,  
And pour the waters of the Nile  
On every golden scale!

How cheerfully he seems to grin  
How neatly spreads his claws,  
And welcomes little fishes in,  
With gently smiling jaws!

Go

- a. In this Wordle I've chosen **How doth the little crocodile** a poem by Lewis Carroll to stimulate discussion on aspects of the poem.
- b. Click on "Go".

3. Once the coloured word cloud appears, one can edit the image in a number of ways.



- a. Language
- b. Font
- c. Layout
- d. Colour

Editing by using these options enables tighter control over the end result.

4. Select "Language" and the option to Remove common English words. This will leave behind mainly key words.

The screenshot shows a web browser window with a Wordle word cloud. The browser's address bar shows "Web Slice Gallery" and "My Delicious" and "Save to Delicious" buttons. The browser's menu bar includes "File", "Edit", and "Language". The "Language" menu is open, showing a list of options. The "Remove common English Words" option is selected, indicated by a bullet point. The word cloud itself is a collection of words in various colors and sizes, including "tail", "claws", "spreads", "crocodile", "neatly", "doth", "scale", "cheerfully", "fishes", "welcomes", "seems", "gentle", "smiling", "waters", "every", and "little". The word "little" is the largest and most prominent.


Language

- Leave Words as Spelled
- make all words lower-case
- MAKE ALL WORDS UPPER-CASE
- Do Not Remove Common Words
- Remove common Arabic Words
- Remove common Catalan Words
- Remove common Croatian Words
- Remove common Czech Words
- Remove common Dutch Words
- Remove common Danish Words
- Remove common English Words
- Remove common Esperanto Words
- Remove common Farsi Words
- Remove common Finnish Words
- Remove common French Words
- Remove common German Words
- Remove common Greek Words
- Remove common Hindi Words
- Remove common Hungarian Words
- Remove common Italian Words
- Remove common Latin Words
- Remove common Norwegian Words
- Remove common Polish Words
- Remove common Portuguese Words
- Remove common Romanian Words
- Remove common Russian Words
- Remove common Slovenian Words
- Remove common Slovak Words
- Remove common Spanish Words
- Remove common Swedish Words
- Remove common Hebrew Words
- Remove common Turkish Words

tail claws spreads crocodile neatly doth scale cheerfully fishes welcomes seems gentle smiling waters every little

5. If you don't need great control over the end product, select the option to "Randomize".



 Open in Window

 Print...

 Randomize

 Save to public gallery...

One can keep randomising the layout until a satisfactory word image is produced.

## 6. Using the tilde to join up words into phrases.

Paste in a bunch of text:

```
How~doth~the~little~crocodile  
Improve~his~shining~tail,  
And~pour~the~waters~of~the~Nile  
On~every~golden~scale!
```

```
How~cheerfully~he~seems~to~grin  
How~neatly~spreads~his~claws,  
And~welcomes~little~fishes~in,  
With~gently~smiling~jaws!
```

Go

The tilde is found above the hash (#) symbol. It is useful if one wants to get students to explore placing lines of poetry into an alternate order, or to discuss use of language.

## 7. Result of the use of the tilde.

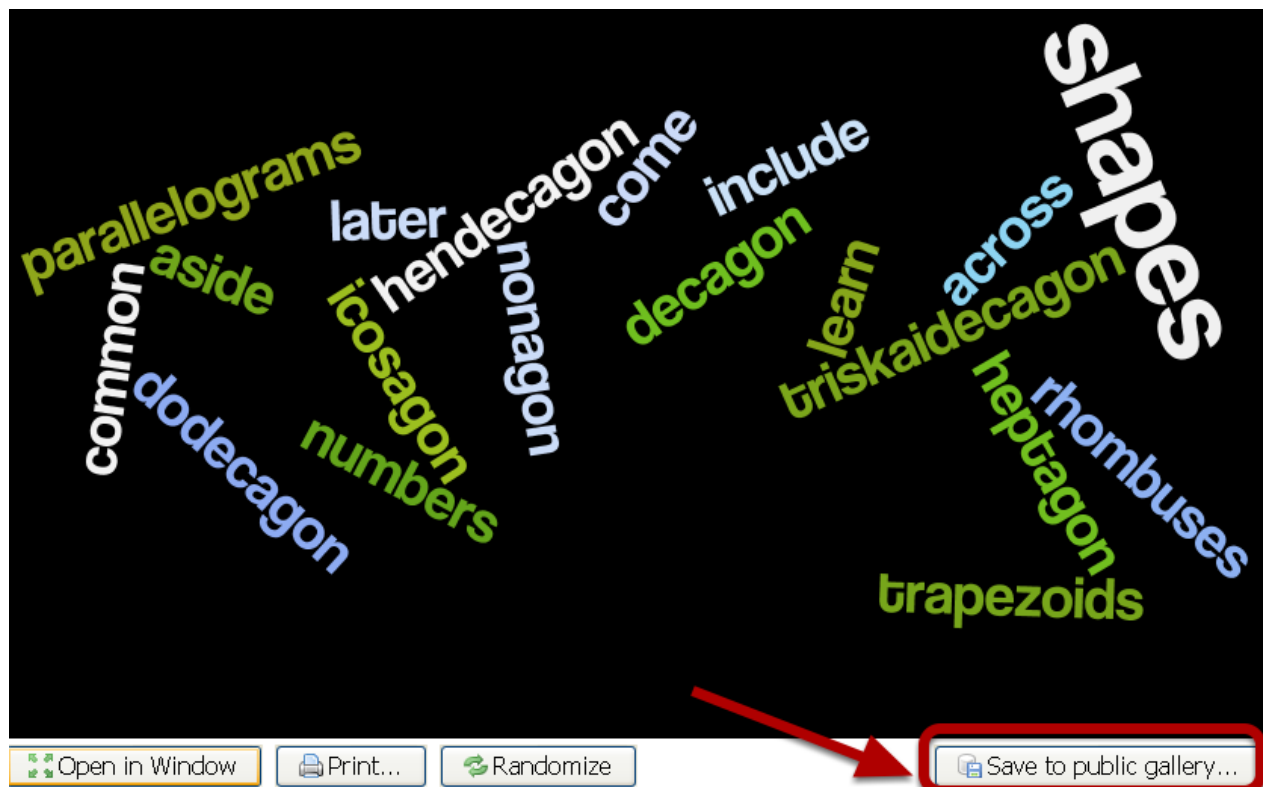
*And pour the waters of the Nile*  
*And welcomes little fishes in*  
*How cheerfully he seems to grin*  
*How doth the little crocodile*  
*How neatly spreads his claws*  
*Improve his shining tail*  
*On every golden scale*  
*With gently smiling jaws*

8. Use of Wordle to discuss the focus of an essay.

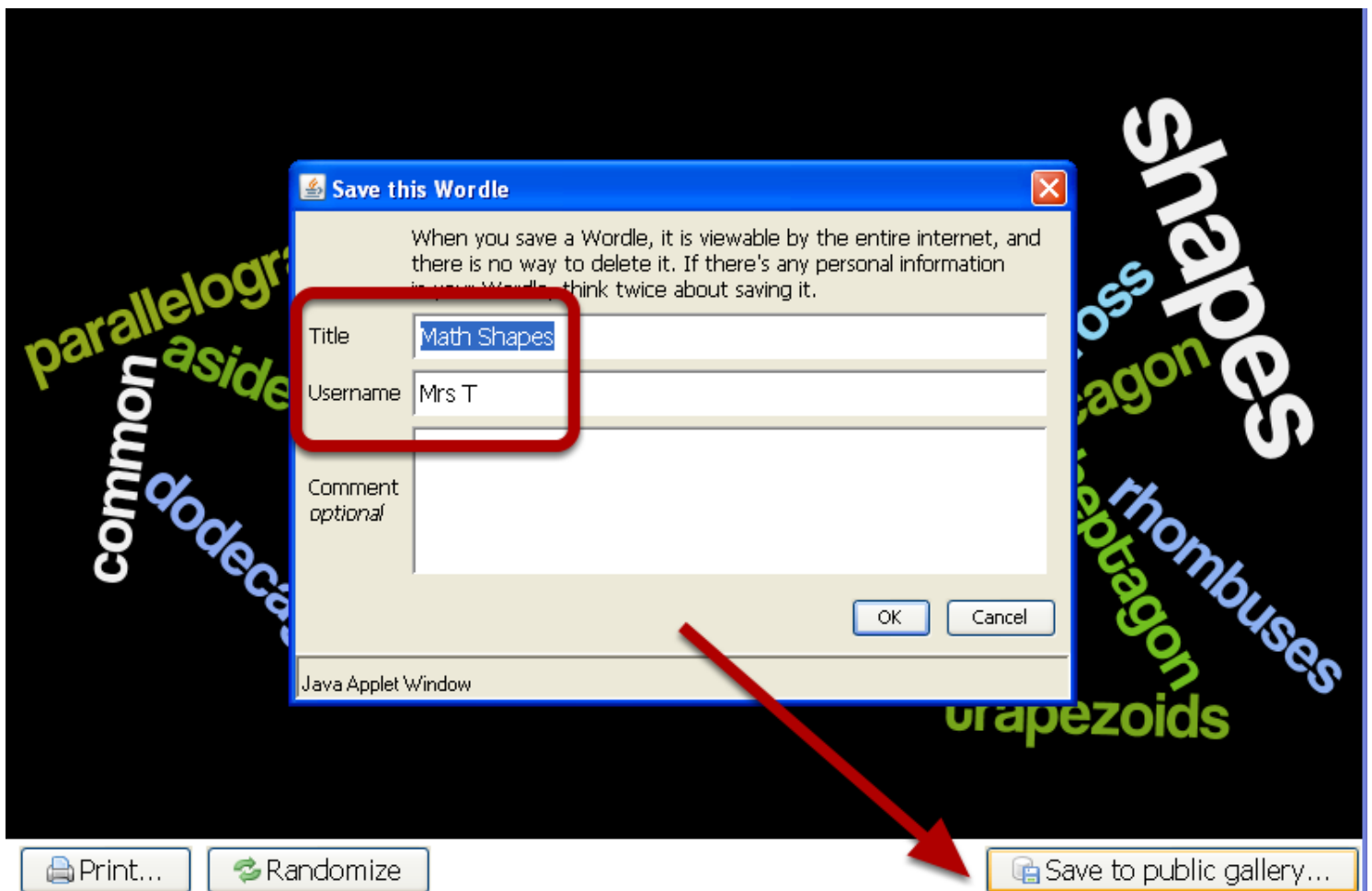


Ask students what the essay in the Wordle is about. Develop the discussion by elaborating on key words.

9. Save the Wordle for future use.



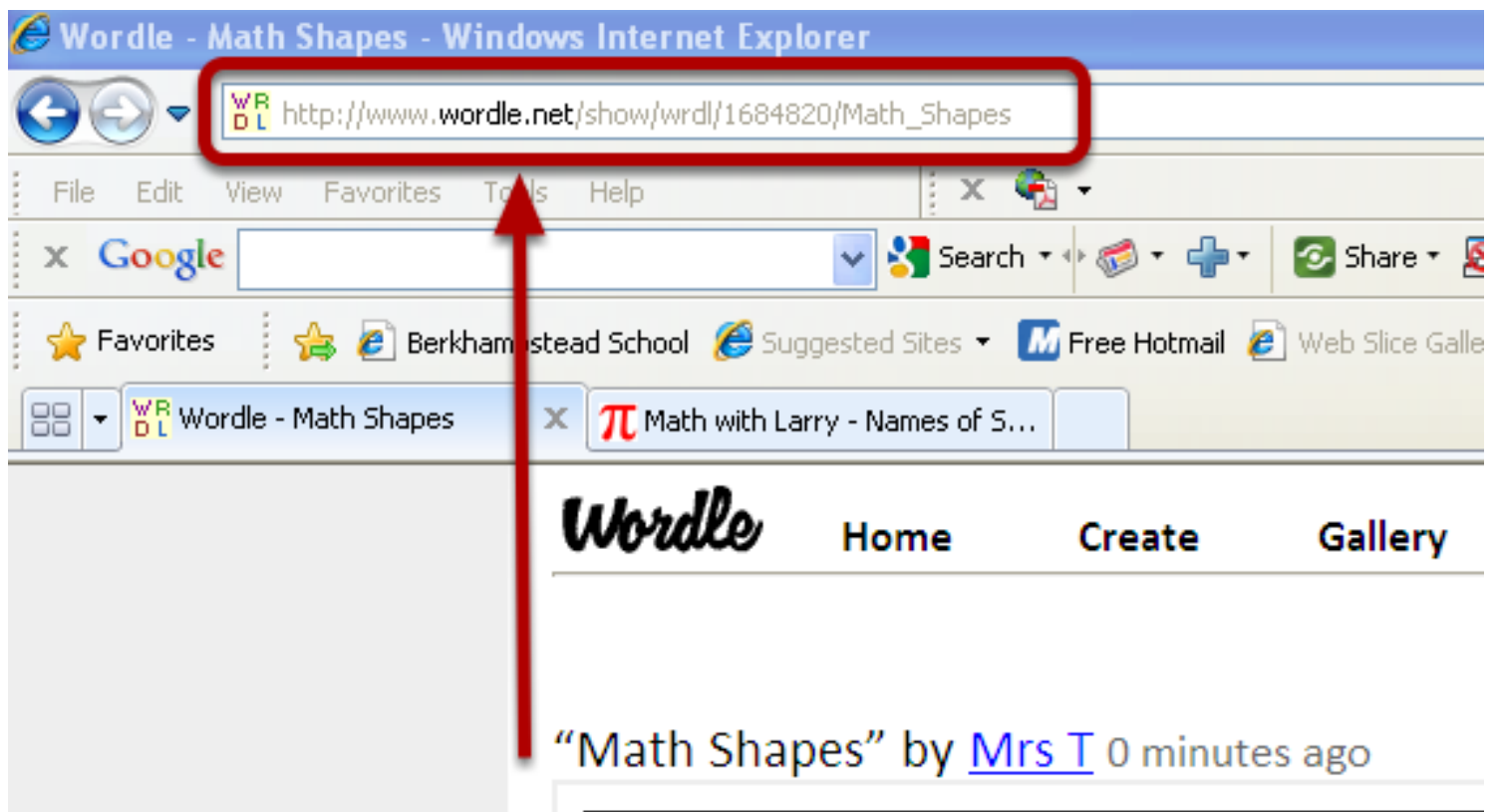
10. Give the Wordle a title.



- a. Give the Wordle a title and insert a username.
- b. Select "Save to public gallery".



## 11. Save the URL.



Save the URL to a book marking site, your favourites, or copy and paste it into a word processed document.

## 12. Printing the Wordle.



Even though there is an option to print the Wordle, the outcome is not always successful. It is best to print screen the result, edit this in an image editing application, save as an image file - and then print it.